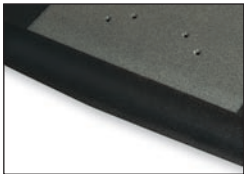


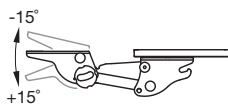


Optimal In-Line

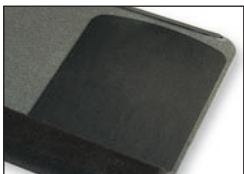
Preconfigured Adjustable Keyboard Systems



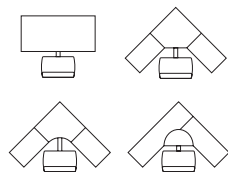
Lycra gel palm rest for keying comfort



Tilt range meets ANSI/BIFMA standards



Generous mousing surface incorporated into tray



Works with virtually all popular workcenter configurations

When Value is at a Premium

Optimal In-Line keyboard systems offer rock-solid performance at a value price. Optimal incorporates a single, soft-touch knob adjustment for both height and tilt. Built-in cable management and an integrated user guide ensures ease-of-use for both installer and user alike.

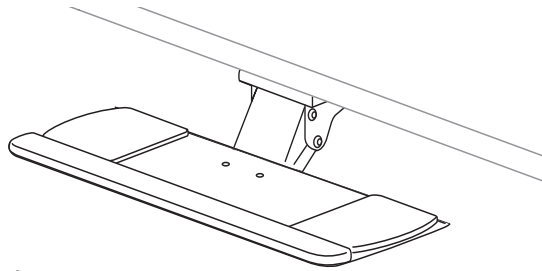
Platform Highlights

- Tired of mousing on the right? Change over the left by sliding the keyboard! One-piece keyboard platform with dual mousing areas.
- Long lasting, this platform is strong and durable using phenolic construction.
- Maximum leg clearance and easy to adjust. This platform is a low profile design.
- Limited lifetime warranty.

Mechanism Available

Optimal mechanism provides +15° / -15° tilt and is available in two track lengths.

Optimal In-Line — Preconfigured Adjustable Keyboard Systems



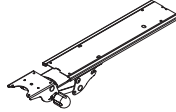
OPT-14 shown

Platform Features:

- Model PC2524 platform
- One piece phenolic keyboard platform with dual mouse surfaces
- Slim profile for maximum leg clearance and ease of adjustment
- Lycra gel palm rest
- Non-skid surface pads keep keyboard stationary

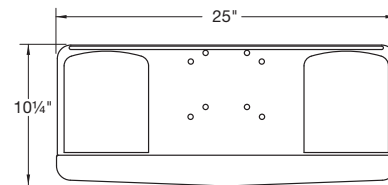
Arm Mechanism Options:

- Soft Touch knob adjustments of both height and tilt
- 6" of height adjustment (1" above the surface)
- 15° +/- tilt & 360° swivel
- EZ-Glide track in two lengths, all are 5½" wide
- Cable management system
- Steel construction with durable powder coat finish.
- Surpasses ANSI/BIFMA standards
- Positive tilt lock-out option available

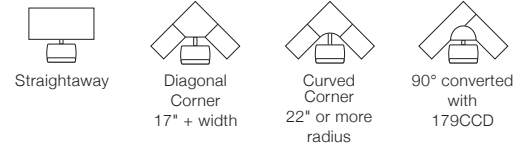
Mechanism	Track Length	Weight	Model #
	18"	14	OPT-13
	21"	14	OPT-14



Platform PC2524



For Use With The Following Desk Systems



The following are federally registered trademarks of Workrite Ergonomics: Workrite Ergonomics®, Keynetix®, Comfort Plus®. The following is a trademark of Workrite Ergonomics: Idea at Work™.

Printed with 25% post-consumer waste, 50% total recycled content.
1400105-0408 ©2008 Contents subject to change without notice.

Idea at Work
1450 Technology Lane
Petaluma, CA 94954
www.idea-at-work.com
800.959.9675

